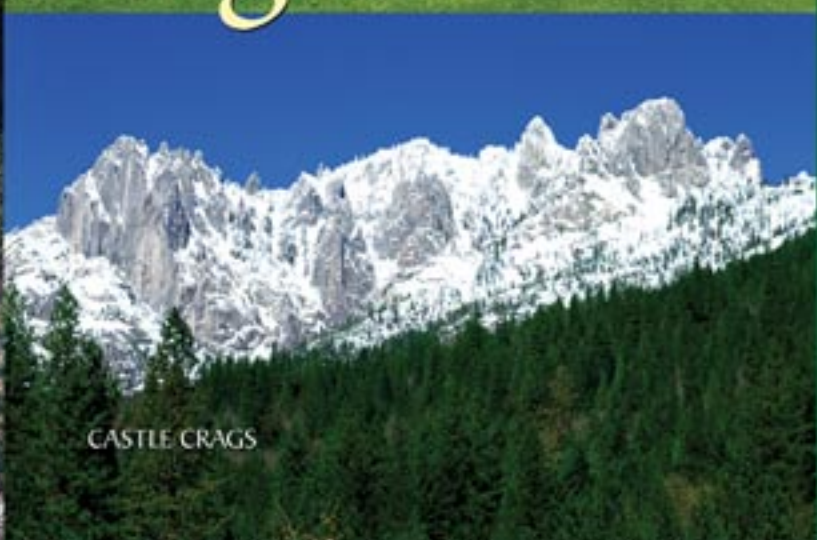


Discover the Magic of the Mt. Shasta Region

MOUNT SHASTA RESORT



SHASTA SUNSET DINNER TRAIN



CASTLE CRAGS

we've got your reason...pick your season



MOUNT SHASTA RESORT

golf • restaurant • lodging



Play one of the best championship courses in Northern California.



golfing

A championship course with natural terrain, undulated greens and spectacular scenery. All 18 holes are uniquely different with 3 sets of tees and yardages. The course is challenging and enjoyable for all players regardless of skill level.

- Driving Range
- Pro shop
- Lessons
- Rentals
- Carts Optional
- Tennis

1000 Siskiyou Lake Boulevard
Mt. Shasta, CA 96067

www.mountshastaresort.com

530-926-3030

Reservations
800-958-3363

Pro Shop
530-926-3052

Day Spa
530-925-2311

MOUNT SHASTA RESORT

GOLF & LODGING

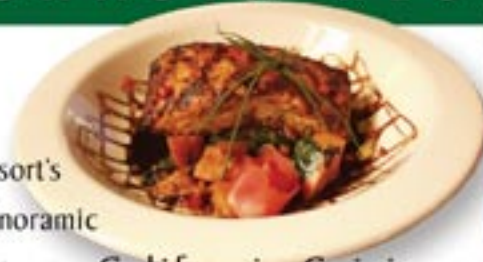
HIGHLAND HOUSE

RESTAURANT





dining



Experience exquisite dining at the Mount Shasta Resort's Highland House Restaurant featuring awesome panoramic views of Mount Shasta and the surrounding landscape.

- California Cuisine
- Full Service Restaurant & Lounge
- Sunday Brunch
- Banquet Facilities
- Early Bird Specials



special events

Quality service and exceptional decor provide a truly memorable experience.

- Weddings
- Banquets
- Seminars
- Family Reunions
- Tournaments

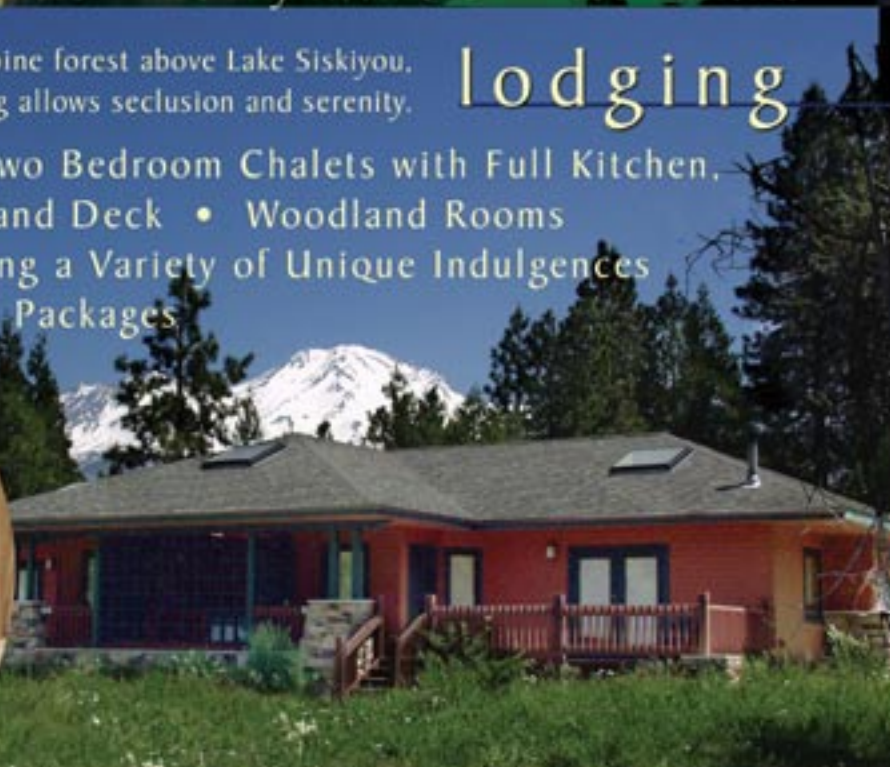


spa

Nestled in the Alpine forest above Lake Siskiyou, resort lodging allows seclusion and serenity.

lodging

- One and Two Bedroom Chalets with Full Kitchen, Fireplace and Deck
- Woodland Rooms
- Spa Offering a Variety of Unique Indulgences
- Golf & Ski Packages



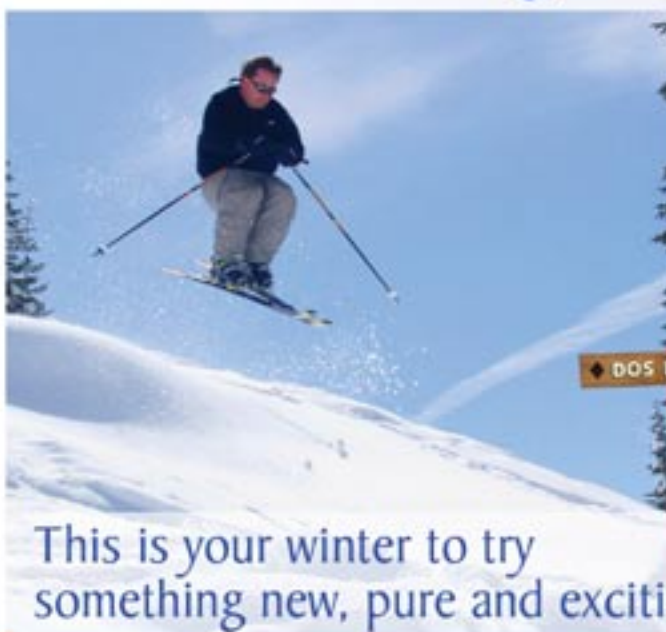
skiing & snowboarding

Join us this winter in one of the most spectacular settings on earth - mighty 14,162' Mt. Shasta.

Discover skiing, snowboarding and cross country trails at one of California's most unique resorts where you and your family can rest easy and enjoy the lifestyle of affordable winter adventure.

The Mt. Shasta Board & Ski Park offers intimacy and yet has something for everyone! With miles of fabulously groomed trails that cater to all levels of skill, the park is a cruisers paradise and a powder hounds' delight when Mother Nature pays a visit. Trick riders and wannabes can access two terrain parks which feature all the hits, jibs rails and half pipes that guarantee to get the adrenaline rushing. For those new to winter activity, the park's gold medal learning center programs are considered some of the finest in the industry. With our "Guaranteed to Learn" introduction packages, we promise you will be an experienced snow rider in no time or the next set of lessons are on us! and our snow kids' programs are truly awesome - kids and parents love what we teach 'em!

Always affordable and easy to get to, the Mt. Shasta Board & Ski Park is located just 10 miles East of I-5 off of Highway 89.



This is your winter to try something new, pure and exciting



MT. SHASTA BOARD & SKI PARK

1 - 800 - SKI - SHASTA
www.skipark.com

summer

- Scenic Chairlift Rides • Disc Golf
- Mt. Biking • Horseback Riding
- Climbing Tower • Mt. Boarding

Open Wednesday thru Sunday 10am - 4pm
June 26 - September 1



SEASON PASS SALE!

unrestricted \$399 season pass

Ends
September 3

NOW \$249

- Kids 7 & under and 70 over are ALWAYS FREE
- Jr/Sr \$59 • Families \$899
- After September 3....JUST \$299!
- Call or Order On-Line at skipark.com

1 - 800 - SKI - SHASTA
www.skipark.com

MT. SHASTA BOARD & SKI PARK

